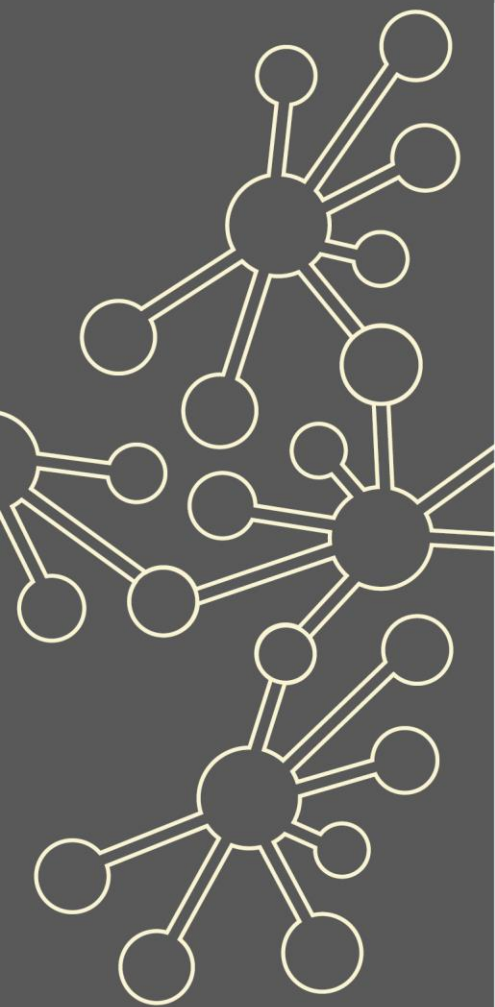


# Specialist Knowledge for Teaching Mathematics Primary Early Career Teachers

Maths Hubs Network Collaborative Projects 2021/22

## NCP21-28



## Outline

This project is designed to support primary early career teachers (teachers in their first two years of teaching) in developing specialist knowledge for teaching mathematics, thus enabling them to understand, teach and support pupils in maths in the classroom.

## Details

### What is involved?

At a local level, Work Groups will explore one of the following themes:

- designing effective learning and teaching in maths (building early number concepts)
- designing effective learning and teaching in maths (additive reasoning)
- designing effective learning and teaching in maths (multiplicative reasoning).

Participants will work deeply on one area of maths, drawing in the associated pedagogy, and activities will include lesson analysis and lesson design. This programme will take place across the equivalent of four days.

### Who can take part?

This programme is designed for primary early career teachers (those in their first or second year of teaching).

### Dates and location

The Work Group will be run across 3 days.  
9am – 3.30pm  
Day 1 - Tuesday 25 January 2022  
Day 2 - Tuesday 22 February 2022  
Day 3 - Friday 25 March 2022

**Location:** Wandsworth Professional Development Centre,  
3rd Floor, Building 1, Burntwood School,  
Burntwood Lane, SW17 0AQ

### How to Apply

Please complete the London South West Maths Hub [online booking form](#) to secure a place in the Work Group.

If you require any more information please contact us by email to discuss your application.

[admin@londonsouthwestmathshub.co.uk](mailto:admin@londonsouthwestmathshub.co.uk)

### What are the benefits?

Participants will:

- ✓ plan and teach a carefully sequenced and coherent area of maths
- ✓ appreciate the key ideas underpinning the area of maths being taught
- ✓ understand key principles and approaches associated with teaching for mastery
- ✓ understand approaches to assess pupils' prior learning, so that learning sequences take this into account
- ✓ make appropriate use of representations to expose the structure of the maths being taught.

### What is the cost?

The SKTM – Primary Early Career Teachers project is fully funded by the Maths Hubs Programme so is free to participating state funded schools.

## Covid-19 Recovery

Many positive lessons were learnt from online collaboration during Maths Hubs activity in 2020/21. These will be built upon in 2021/22.

As the impact of the pandemic hopefully recedes, the result for Maths Hubs work will be a blend of face-to-face activities and frequent online collaboration.

