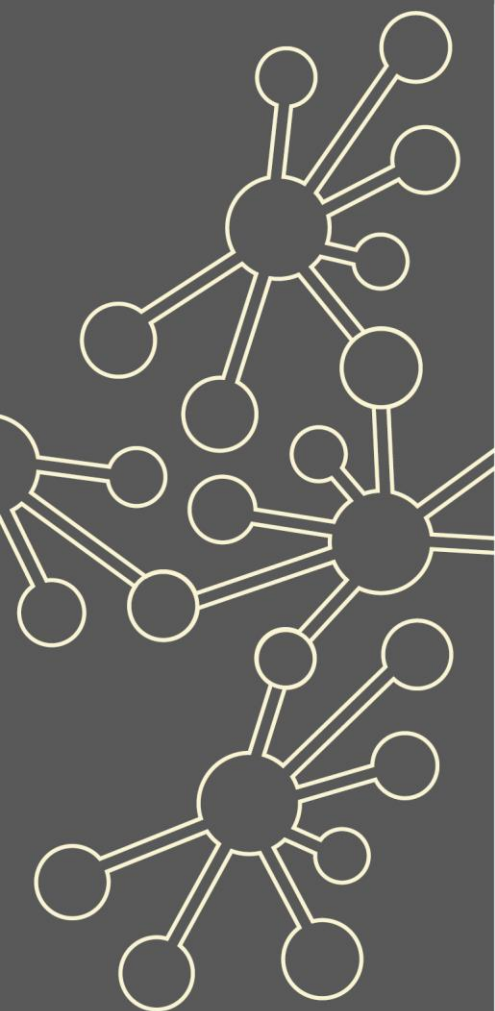


Teaching for Mastery in the contexts of special school and alternative provision

London South West Maths Hub

Research and Innovation Work Group 2021/2022



Website: <http://www.londonsouthwestmathshub.co.uk/>

Twitter: [@lsw_hub](https://twitter.com/lsw_hub)

Outline

This Research and Innovation Work Group focuses on two key questions:

- How does Teaching for Mastery (TfM) translate into non-mainstream provision?
- How can representation and structure be used to increase understanding of maths?

Participants will have the opportunity to work with colleagues from within their own school and others to develop their understanding of the five big ideas in teaching for mastery and apply it to their own practice.

Details

What is involved?

The Work Group design will follow a workshop – school-based work cycle, consisting of several workshops followed in each case by specific school-based work.

The programme will be delivered by a blended approach through a series of pre-recorded sessions, live workshops and follow-up tasks in order to implement tasks and strategies within participants' settings.

Dates

The Work Group will be the equivalent of 3 full days using a blend of face to face, live sessions and recorded webinars. Participants will be required to attend all sessions.

1	Launch (online): 10 February, 3.45pm - 4.45pm *SLT are welcome to join the session
2	Introduction to the programme 23 February, 9.30am - 3.30pm face to face, venue TBC
3	Using Representation and Structure 9 March, 1.30pm - 4pm online
4	Twilight – group to determine the topic 23 March, 3.45pm - 4.45pm online
5	Surgery/catch-up session Twilight in May – date TBC
6	Feedback from schools and evaluation 1.30pm - 4pm date & venue TBC

The facilitator will take into account the needs and logistics of the participants and respond accordingly in terms of timings and delivery of the sessions.

How to apply

Please complete the London South West Maths Hub [online booking form](#) to secure a place in the Work Group.

If you require any more information, please contact us by email to discuss your application.
admin@londonsouthwestmathshub.co.uk

What are the benefits?

Participants will:

- ✓ Deepen knowledge and understanding of the five big ideas of Maths Mastery, with a specific focus on representations and structures
- ✓ Understand how to adapt Maths Mastery within the context of their specific setting
- ✓ Have the opportunity to collaborate with colleagues from other schools across five boroughs in order to share best practice and gain insight into what might work for their specific students
- ✓ Help to inform the Maths Hub, NCETM and DfE as to how Maths Mastery can be implemented in special schools provision

Who can take part?

Teachers in **special schools** in primary, secondary, middle school and all-through schools who teach maths to pupils. Ideally, there will be two teachers from the school so they can discuss and implement changes to their practice.

What is the cost?

Free to state funded participating schools.

Covid-19 Recovery

Many positive lessons were learnt from online collaboration during Maths Hubs activity in 2020/21. These will be built upon in 2021/22.

As the impact of the pandemic hopefully recedes, the result for Maths Hubs work will be a blend of face-to-face activities and frequent online collaboration.

