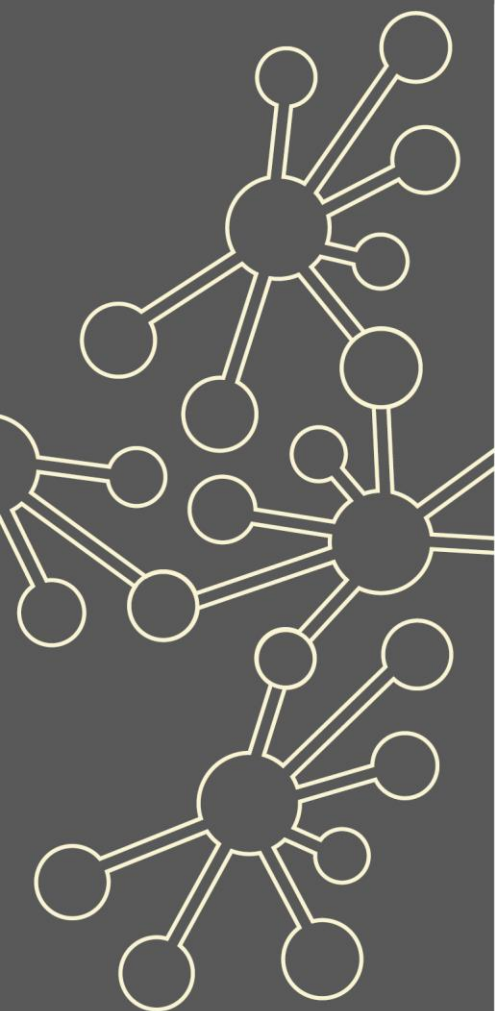


Reducing Maths Anxiety and supporting SEND pupils through Maths Mastery

London South West Maths Hub

Research and Innovation Work Group 2021/2022



Website: <http://www.londonsouthwestmathshub.co.uk/>

Twitter: [@lsw_hub](https://twitter.com/lsw_hub)

Outline

Following on from last year's Research and Innovation Work Group on SEND, this year's project will focus on the impact of Maths Anxiety on learning in mainstream schools. The project will look at different types of difficulties including dyscalculia and how this might impact on pupil confidence. It will explore how mastery approaches can develop pupil confidence as well as strategies specifically to address maths anxiety.

Research question:

Are maths difficulties the cause or effect of maths anxiety and how we can reverse the downwards spiral?

Details

What is involved?

The model will consist of a series of workshops with direct input, opportunities to discuss and share strategies with colleagues across the Maths Hub. This will be backed up by specific school-based work focussing on case study pupils.

Dates

The Work Group will be the equivalent of 3 full days using a blend of face to face, live sessions and recorded webinars. Participants will be required to attend all sessions.

1	Launch (online): 3.45pm - 4.45pm 3 February 2022 *SLT are welcome to join the session
2	Introduction to the programme 24 February 1.30pm - 4pm face to face, venue TBC
3	Graduated Response to supporting SEND 1.30pm - 4pm online date TBC
4	Maths Anxiety 1.30pm - 4pm date and venue TBC
5	Surgery/catch-up session Twilight in May – date TBC
6	Feedback from schools and evaluation 1.30pm - 4pm date & venue TBC

The Work Group Lead will take into account the needs and logistics of the participants and respond accordingly in terms of timings and delivery of the sessions.

How to apply

Please complete the London South West Maths Hub [online booking form](#) to secure a place in the Work Group.

If you require any more information please contact us by email to discuss your application.

admin@londonsouthwestmathshub.co.uk

What are the benefits?

Participants and their schools will:

- ✓ Be more confident in understanding the difficulties pupils face in Mathematics
- ✓ Gain a clearer understanding of maths anxiety and how this might be addressed
- ✓ Collaboratively explore how pupils with Maths Anxiety/SEND can be supported
- ✓ Effectively plan and deliver inclusive learning for their pupils

Who can take part?

- ✓ Teachers in primary, secondary, middle school and all-through mainstream schools who have some responsibility for curriculum development, e.g. primary school maths leads/secondary heads of department.
- ✓ The SENCo or teacher of SEND
- ✓ Classroom teacher working directly with SEND pupils

What is the cost?

Free to state funded participating schools.

Covid-19 Recovery

Many positive lessons were learnt from online collaboration during Maths Hubs activity in 2020/21. These will be built upon in 2021/22.

As the impact of the pandemic hopefully recedes, the result for Maths Hubs work will be a blend of face-to-face activities and frequent online collaboration.

